

# Sunningfields Crescent London, NW4



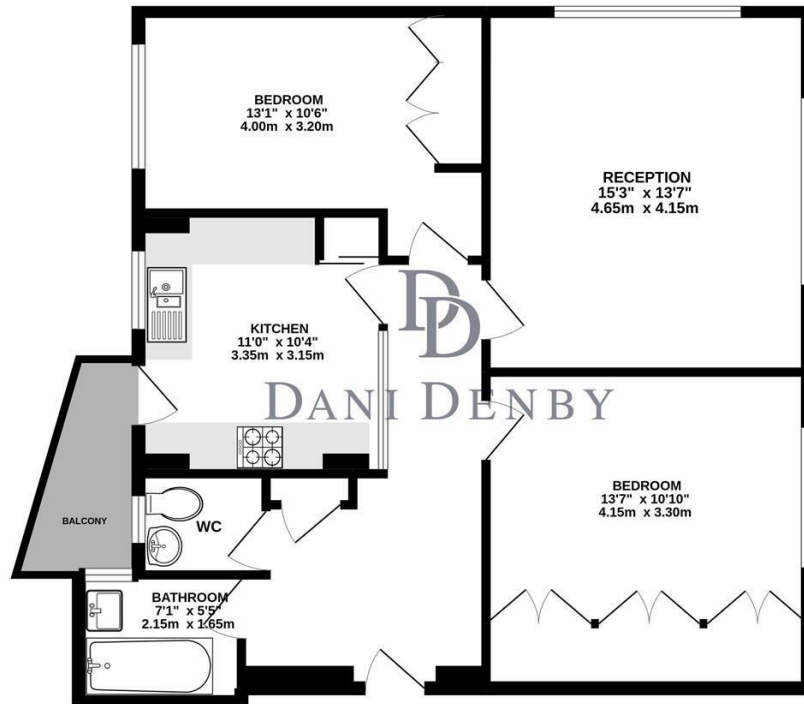
- Two Bedrooms
- Amazing Views
- Chain Free
- Communal Gardens
- Brand New Bathroom
- Share Of Freehold
- Second Floor
- Sole Agents

A bright and spacious two bedroom second floor apartment overlooking sunny hill park. The property benefits from a modern fitted kitchen with direct access to a balcony, two double bedrooms with fitted wardrobes, spacious reception with amazing views over the park, newly fitted bathroom and ample storage. Viewings via sole agents Dani Denby

**Asking price £380,000**







TOTAL FLOOR AREA : 820 sq.ft. (76.1 sq.m.) approx.

Whilst every attempt has been made to ensure the accuracy of the floorplan contained here, measurements of doors, windows, rooms and any other items are approximate and no responsibility is taken for any error, omission or mis-statement. This plan is for illustrative purposes only and should be used as such by any prospective purchaser. The services, systems and appliances shown have not been tested and no guarantee as to their operability or efficiency can be given.

