

## Greenhalgh Walk London, N2



- Two Bedrooms
- Large Eat In Kitchen
- Second Floor
- Garage
- Share Of Freehold
- Chain Free

A well presented two double bedroom flat, situated within a purpose built block in Hampstead Garden Suburb. The property comprises, a large entrance hallway, spacious eat in kitchen, bright reception room, family bathroom and guest WC. The flat includes a garage and is offered for sale chain free. Viewings via sole agent Dani Denby

**Offers in excess of £599,950**





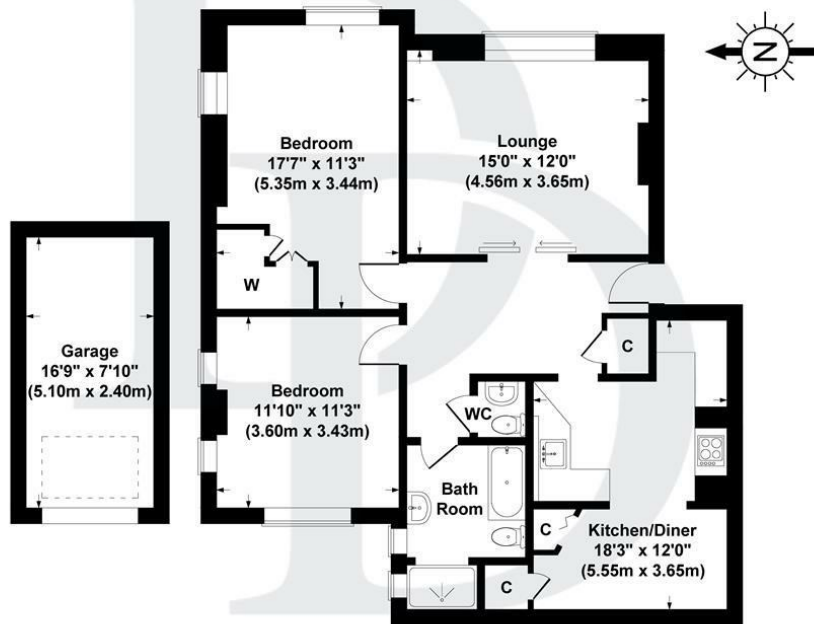
# Crosby Court, Greenhalgh Walk , N2 0DL

## Gross Internal Area

House : 947 sq ft / 88 sq metres

Garage : 129 sq ft / 12 sq metres

Total : 1076 sq ft / 100 sq metres



Garage

Second Floor

All measurements of walls, doors, windows, fittings and appliances, including their size and location, are shown as standard sizes and therefore cannot be regarded as a representation by the seller.



DANI DENBY

