

West Heath Avenue London, NW11

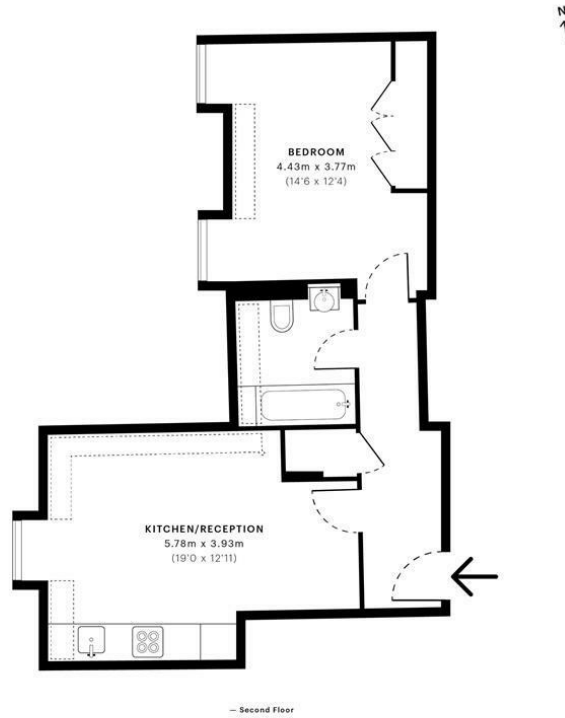


- Share Of Freehold
 - Lift
- Moments From Golders Hill Park
- Chain Free
- Close To The Station
- Sole Agents

A beautifully presented one bedroom apartment situated moments from Golders Hill Park and Golders Green Station. Set within a prestigious block on the second floor with a lift. The property benefits from a double bedroom with fitted wardrobes, modern bathroom, open plan kitchen, underfloor heating and ample storage. Further benefits include allocated off street parking, Share of freehold and is offered chain free.
Viewings Via Sole Agents Dani Denby

Asking price £440,000





Spec Verified floor plans are produced in accordance with Royal Institution of Chartered Surveyors' Property Measurement Standards. Plots and gardens are illustrative only and excluded from all area calculations. Due to rounding, numbers may not add up precisely. All measurements shown for the individual room lengths and widths are the maximum points of measurements captured in the scan.

IPMS 3B RESIDENTIAL: 46.60 sqm / 502.24 sqft
 IPMS 3C RESIDENTIAL: 45.16 sqm / 486.10 sqft
 spec id: 6113cf56994590da23deaf

